

CRAMLINGTON LEARNING VILLAGE



WHERE THE ART OF TEACHING MEETS THE SCIENCE OF LEARNING





WELCOME

**WE ARE A HAPPY AND VIBRANT SCHOOL
WHERE YOUNG PEOPLE CAN FLOURISH
AND REACH THEIR FULL POTENTIAL.**



WE ARE PLEASED TO INTRODUCE YOU TO OUR PROSPECTUS FOR STUDENTS JOINING US TO COMMENCE THEIR SECONDARY EDUCATION IN SEPTEMBER 2025.

At Cramlington Learning Village our students are at the heart of everything we do. Our exciting and innovative lessons are designed to give our young people the opportunity to think big and succeed. We believe we create a positive learning environment recognising that students are all unique with abilities and talents to be discovered and developed. We hope that within our comprehensive extra-curricular programme, lunch clubs and problem solving days there is something for everyone to engage with and enjoy.



At Cramlington, every individual matters: We follow each student's progress carefully and students are supported by a large pastoral team. This gives us the opportunity to get to know our students quickly and ensure our young people feel secure and are able to thrive.

We look forward to seeing you at our open evening, getting to know you and welcoming your child to our school in September 2025.

Mr J Bird & Ms K Irving
Co-headteachers

OUR CORE PRINCIPLES

The school has a set of core principles, which are infused throughout our culture, our classrooms, and are a key part of our everyday language.

THIS IS A SCHOOL BUILT ON RESPECT, DEVELOPING RESILIENT LEARNERS, EXPERT READERS, KNOWLEDGE EXPLORERS AND RESPONSIBLE CITIZENS

Developing **resilience** is a key attribute for all students as they tackle the challenges of a demanding academic curriculum as well as social and emotional challenges as they grow and develop. As a school we look to support our students with their physical, emotional, mental health and wellbeing. Further than this, developing resilience in our students includes training them in the strategies used by successful students to reflect and evaluate their learning performance and recognise how they can improve.

The emphasis on developing **expert readers** reflects our key priority of developing literacy. Students with good literacy skills are proven to benefit not just in examinations, but across a range of areas when they leave school, including health and wellbeing, employment and finance. To facilitate this for all students, reading is “every teacher’s business” with students regularly engaging with age-appropriate texts and deliberate attention being paid to building the specialist vocabulary required for each subject area. Where students need support with their reading, a range of strategies are implemented, with a high emphasis on identification and support at Key Stage 3.

The core principle of developing **knowledge explorers** is reflected in ongoing work on the curriculum which will help students to construct, develop and retain a core body of academic knowledge and skills which prepares them for examinations in a broad range of subjects. Subject departments carefully plan how student knowledge and skills will be built up over time, taking into account their prior knowledge. We use effective assessment routines to check that pupils retain and develop their specialist knowledge throughout each key stage.

As a school it has long been our aim to develop our students into **responsible citizens**, so that they all move on to their chosen destinations with the cultural competence and confidence they need to thrive. Our students embrace opportunities to be respectful, active members of our community and develop a sense of responsibility. Through our classroom teaching and pastoral, enrichment and wellbeing programmes, it is our aim to always raise the aspirations of our students, engender a strong sense of British values and to celebrate and embrace the different backgrounds, heritage, language and traditions of all the people living and working in this country.

A SCHOOL BUILT ON RESPECT CREATING:







ACADEMIC SUCCESS

This year, at GCSE, over 65% of students achieved a good pass in both English and Maths. Our students achieved a total of 120 grade 9s, the highest grade awarded in a subject.

At A Level, we have a very impressive record with almost 70% of students regularly achieving A*, A or B grades.

We aim to combine academic success with the ability to think and work independently in order to prepare our students for their future careers or studies.

“

Alex has made a very smooth start. This is all down to this school and the support given. Superb.

”

PARENT - YEAR 7



“

Teachers are well trained in understanding pupils' individual needs and how to best meet them. Leaders ensure that all pupils have access to the same high quality experiences.

”

OFSTED 2022

THREE PARTS, ONE WHOLE

THE SCHOOL IS DIVIDED INTO THREE DISTINCT PARTS:

JUNIOR LEARNING VILLAGE FOR YEARS 7 AND 8

SENIOR LEARNING VILLAGE FOR YEARS 9, 10 AND 11

ADVANCED LEARNING VILLAGE FOR THE SIXTH FORM

JUNIOR LEARNING VILLAGE

The JLV is a state-of-the-art school building for the twenty first century. It is based on the latest in educational thinking, with facilities ranging from state-of-the-art science laboratories to classrooms designed to provide students with comfortable and spacious surroundings. All year 7 students are given the opportunity to opt into our Chromebook scheme. This will allow flexible use of technology in the classroom and at home.

All the classrooms are situated off the central 'Street', a large covered outdoor space. Other facilities include TV and music studios, an animation centre and a high-tech performance space. At the end of the Street is the Biome which is the school's own mini-Eden project, complete with trees and plants, which will be studied and tended by students as part of their Science lessons.

SENIOR LEARNING VILLAGE

We have installed state-of-the-art science labs with the latest IT equipment. There are large social areas for students, which offer somewhere to be warm, dry and comfortable during breaks and lunchtimes as well as giving them the opportunity to access the Internet or our VLE on one of the many computers available.

In our Learning Resource Centre, students are encouraged to read widely for pleasure and can borrow from an excellent range of resources. Online databases and a large collection of books and journals are available to help with independent research. Our Librarian can help students find the information they need for their home learning and encourage them to think for themselves.

ADVANCED LEARNING VILLAGE

Our successful Sixth Form attracts students from CLV and beyond. Our students have access to a huge range of qualifications and have their own bespoke area, which includes a study space with 60 PCs and a social area with kitchen facilities.

Our students travel on to a range of destinations across the UK and beyond. They are well supported with careers advice and support. In our most recent inspection in 2022, Ofsted commented that 'Leaders ensure that pupils are prepared for their next steps through careers guidance. Leaders focus on raising pupils' aspirations and pupils learn about skills they will need for employment.'







SUPERB FACILITIES

STUDENTS COMING TO CRAMLINGTON LEARNING VILLAGE WILL HAVE **ACCESS TO SOME OF THE BEST FACILITIES OF ANY SCHOOL IN THE COUNTRY.**



THE HUB

This area acts as an assembly hall, a drama studio, and a state-of-the-art performance space with seating for up to 350 people.

THE KNOWLEDGE CAFE

Students can use this area from 8:15am until 4:30pm and in the morning they can have breakfast whilst accessing the computers or reading the books and magazines available.

THE STREET

With its covering roof this outdoor space provides shelter from the elements and a safe area for students to congregate, socialise and eat their lunch or just relax.

THE BIOME

This unique learning space contains a variety of trees, plants and vegetation from a Mediterranean-type environment. Students work in this area as part of their Science lessons.

SPORTS CENTRE

All students have access to the school's superb sports facilities which include two sports halls, a gym fitted with the latest weight and aerobic equipment, a dance studio and outside a huge floodlit synthetic pitch, hard court areas for tennis and netball and cricket nets.

TV STUDIO

Our green screen studio can transport your child to another world. Students have the opportunity to explore media through presenting, directing and script writing.

“

Sarah comes home very happy and excited every day and looks forward to school the next day.

”

PARENT - YEAR 7

OUR CURRICULUM

AT CRAMLINGTON LEARNING VILLAGE WE HAVE DESIGNED THE CURRICULUM TO **ENSURE IT CARES FOR THE NEEDS OF ALL STUDENTS.** WE AIM TO ENSURE ALL STUDENTS ACHIEVE THEIR POTENTIAL.

KEY STAGE 3

We encourage all students to pursue excellence and to work to the best of their ability. Every encouragement is given to our students to:

- enjoy learning
- take responsibility for their own learning
- develop good learning habits including cooperation, collaboration, persistence and resourcefulness
- think about how they learn and develop strategies for success
- solve problems and make decisions
- become independent and life-long learners.

Students are placed in mixed ability home groups, which forms the basis of some of their lessons. In the core subjects of Maths, English and Science, students are set according to their ability which allows individuals to work at the appropriate pace. The sets are regularly reviewed, with movement between sets where appropriate.

All students follow National Curriculum core and foundation subjects:

- English, Maths, Science
- Geography, History, Religious Studies
- Languages, Music, Technology including Food Technology, Computing, Art
- Physical Education
- Dedicated reading lessons for non-fiction texts
- Tutorial work including Careers and PSHE (Personal, Social and Health Education), including statutory Relationships and Sex Education
- SECURE - an opportunity for students to choose from options such as STEM, Art, Cookery and Health or to spend more time on subjects such as English and Maths.



KEY STAGE 4

As a large school the range of opportunities we provide is second to none. We offer year 10 students the widest possible range of options, enabling everyone to find a combination of courses which complements their interests and talents. Specialist staff are available in all curriculum areas, helping to develop your child's abilities to their fullest extent. We are able to cater for the needs of all students, from the most academically gifted to those with special educational needs. All students will have individual learning pathways, opportunities to study vocational courses and to take part in work experience. Our Applied Learning Centre offers students the opportunity to take construction and engineering.

HOME LEARNING

Independent Study is an important feature of your child's education. Home Learning encourages good study habits and time management. The increasing demands of the curriculum also place responsibility on all students to be involved with regular revision of their knowledge in preparation for key assessments which take place throughout the year.

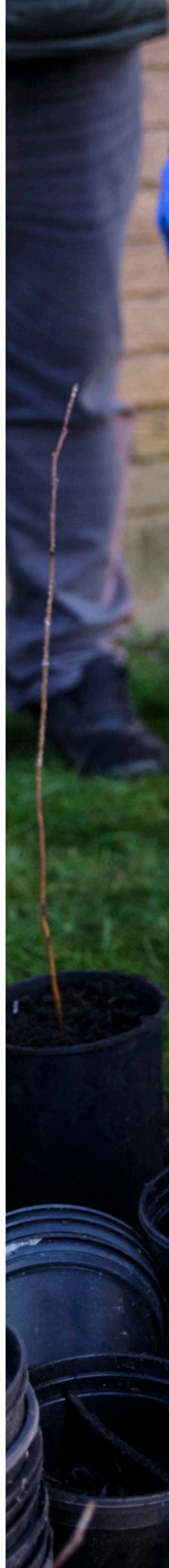
Home Learning is set regularly by all subjects and in the JLV your child should expect to spend approximately one hour each school night on their home learning. Home Learning tasks are planned by each subject department to support the learning students complete in their lessons. Tasks range from consolidation exercises which help to review learning, revision, practice of key skills as well as research and creative tasks. To support students and parents, the Homework Zone runs as a regular club every day after school in the Knowledge Cafe where there is also access to ICT and staff support.

SPECIAL EDUCATIONAL NEEDS

All students have individual learning needs. For some students this could be help with reading, spelling or number work, for others it may be that additional challenges are needed because they have a particular strength or talent. Subject staff work closely with the special needs team to ensure that all students can understand the work. We have good provision for students who have special needs due to their physical ability and students with hearing difficulties are fully integrated into the school.

CAREERS & GUIDANCE

All students follow a full Careers programme. We provide a Careers Adviser who is available to work on an individual basis with students. There is an excellent careers library in the Learning Resource Centre and computer-based information is also available.







“

The new co-headteachers have an ambitious vision for the school. They ensure that pupils' education is underpinned by respect, resilience and responsibility.

”

OFSTED 2022

PASTORAL SYSTEM

Every student at this school matters. We want them to enjoy their time with us, to feel secure and know that if they have a problem it will be dealt with. To ensure this we have an established system of pastoral care.

A Learning Manager has overall responsibility for the care, discipline and academic progress of students in each year and they are supported by a Pastoral Co-ordinator and an Assistant Learning Manager.

All students are placed in a mixed ability home group of 28-30 students. Each group has a Learning Guide who gets to know each student on an individual basis and establishes a relationship whereby they can discuss issues and concerns in an atmosphere of trust and mutual respect.

The Learning Guide meets the group on a daily basis and plays an important role in helping students to deal with issues as they arise. Learning Guides monitor academic progress, and help to ensure that students reach their potential.

We also have a Counsellor who can give confidential advice and guidance to our students.

A SMOOTH TRANSFER

Before students join us we will have consulted with their previous school. We aim to create a smooth transfer to ensure that we get the best from your child. Regular meetings take place with our colleagues in the primary schools to discover your child's particular needs and abilities.

Year 6 students have the opportunity to visit the Junior Learning Village, and a full transition day also takes place in the summer term where year 6 students join us for a day in school. It offers our new students the opportunity to meet their Learning Guide, students in their Home Group, sample lessons and find their way around the campus.

We provide opportunities for parents to meet learning guides and visit the school early in year 7 so they can ask questions and discuss how well their child has settled in.

WORKING IN PARTNERSHIP WITH YOU

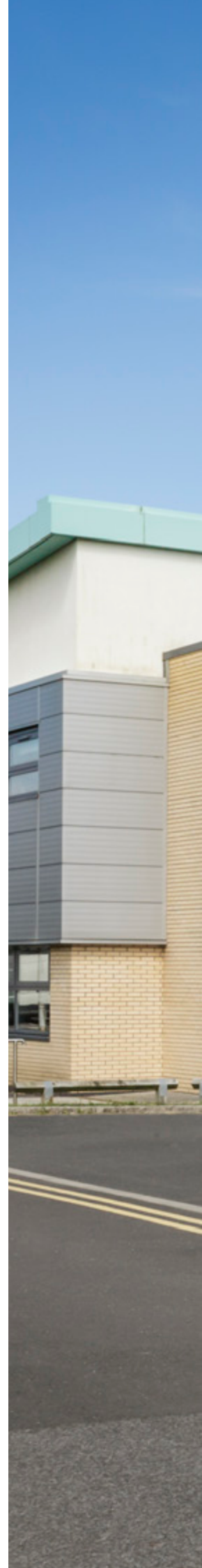
We are committed to working in partnership with you to provide the best possible education for your child.

We will keep you up to date with school news by newsletters, the Parent Portal and our website. We invite you to parents' evenings, provide progress reports and an end of year report.

We share information about student awards, celebrate progress and invite you to our music and drama productions. We run 'Parents in Partnership' programmes with interesting topics e.g. How can I help my child revise?

WE ASK PARENTS TO

- Encourage your child to talk to you about school life
- Help your child to be organised, use their homework planner, bring the right equipment to school
- Encourage your child to complete all home learning tasks and to check homework planners
- Encourage your child to join in after-school activities.





Cramlington Junior
Learning Village

WORKING TOGETHER

BEYOND THE ACADEMIC CURRICULUM

A FLEXIBLE TIMETABLE

We often reorganise the curriculum to allow larger blocks of teaching time and students have an opportunity to study for longer periods and in greater depth. This includes our Well Being days where students are immersed in a topic or issue. These take place throughout the school year. This also allows us to bring in outside speakers and experts to work with groups of students on particular issues appropriate to their age.

“ Pupils are prepared effectively for life in modern Britain. There is a well-planned personal, social, health education (PSHE) curriculum.

”

OFSTED 2022

CHALLENGE WEDNESDAY

Challenge Wednesday is all about learning new skills, working with new people, discovering new interests and having fun. It takes place every Wednesday afternoon from 2.30pm until 3.30pm and each activity lasts for 6 weeks. Each student in year 7 participates in 6 activities across the school year.

Many of the activities are based in school with some sporting activities taking place at Concordia Leisure Centre. Examples of the activities on offer are:

- sports
- dance
- coding
- drama
- creative crafts
- ceramics.

The tutors and coaches for all the activities come from the local area including community groups, dance companies and sports partnerships.





“

Pupils are considerate and thoughtful in class and as they move around the school. The school encourages them to think about their responsibilities to themselves and each other.

”

VISITOR TO THE SCHOOL

ENRICHMENT ACTIVITIES

Life at CLV goes well beyond the classroom. There are opportunities on offer to students who wish to take part in activities at lunchtime, after school and during the holidays. All of our departments offer at least one enrichment opportunity, so there is something for everyone to enjoy. We encourage all students to make the most of at least one enrichment opportunity and attend regularly through the year.

Sports teams run at all age levels in football, rugby, cricket, netball, basketball and athletics, and they are among the most successful in the North East. There are also opportunities for students to take part in tournaments, golf and tennis competitions as well as receive regular coaching to develop their individual skills. In Performing Arts there are music, dance and drama clubs taking place after school which lead up to major productions.

Revision classes take place after school in many subjects, giving students the chance to go over topics with their teachers, improve their work or catch up on any work they may have missed.

In the morning we have our breakfast club, offering a selection of hot and cold food to those students who like to arrive early.



OPPORTUNITIES FOR YOUR CHILD

If you choose to apply to send your child to us you are choosing a school which:

- Provides excellent facilities for learning
- Cares about each individual student
- Encourages independent learning
- Provides outstanding ICT facilities
- Offers an extensive range of extra-curricular activities
- Has a superb reputation for sporting excellence
- Outstanding pastoral care and support
- Offers a wide range of post-16 courses at Sixth Form
- Provides excellent careers guidance on post-16 and post-18 options
- Encourages students to become active citizens within their own and the wider community
- Enjoys excellent exam results.





HIGHBURN NORTHUMBERLAND NE23 6BN TEL: 01670 712311 FAX: 01670 730598
E: ENQUIRIES@CRAMLINGTONLV.CO.UK W: WWW.CRAMLINGTONLV.CO.UK